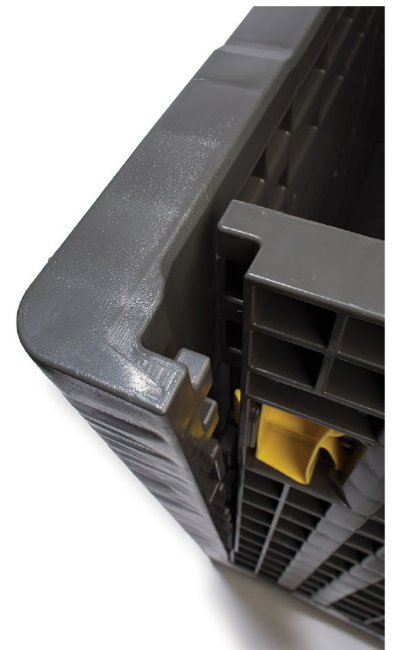
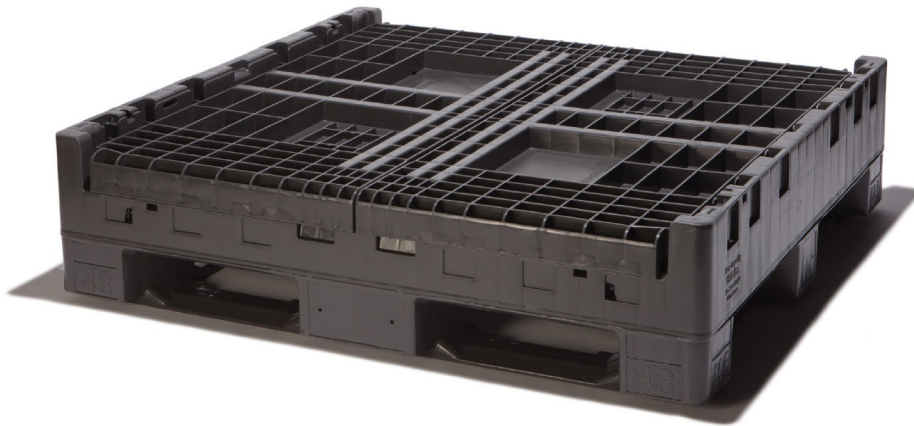


COLLAPSIBLE BULK CONTAINER

REUSABLE TRANSPORT PACKAGING

USAGE

These bulk containers are designed for ultimate durability with high-pressure injection molded plastic and an I-beam welded base. This makes them ideal for storing and transporting heavy materials throughout the supply chain. Collapses to 12.5 inches for easy transportation. Plastic gaylords (a common term for bulk containers) are widely used across the automotive industry and its components suppliers as they often meet the specifications of the Automotive Industry Action Group (AIAG). Collapsible bulk containers are available in various footprints and heights to fit any specialized applications.



SPECS

- **COLLAPSIBLE:** Collapses to a height of 12.5", saving space
- **REPAIRABLE:** Plastic latches and components can be replaced
- **INVENTORY CONTROL:** Certain models have large labels and cardholders

DIMENSIONS

Model	Outside Dimension (In.)			Inside Dimension (In.)			Material	Volume (Cu. Ft.)	Molding Process	Weight (Lbs.)	
	L	W	H	L	W	H				Tare	Capacity
CC02-484525	48	45	25	44.5	41.5	19.5	HDPE	19.3	Injection	99	2500

SALES & INFORMATION

Contact your RTP representative today: **727.319.2300** or **ReusableTransPack.com**